

CORPORATE PROFILE



- ROAD PAVING & DEVELOPMENT • EARTHWORKS • HEAVY EQUIPMENT RENTAL
 - LAND & MARINE DREDGING • CIVIL ENGINEERING • GENERAL CONSTRUCTION
- 152 BWIA BOULEVARD, GOLDEN GROVE ROAD, PIARCO, TRINIDAD W.I.
TEL: (868) 669-4851 • FAX: (868) 669-7130 • www.kallco.com

Kallco

ROAD PAVING & DEVELOPMENT • EARTHWORKS • HEAVY EQUIPMENT RENTAL • CIVIL ENGINEERING • GENERAL CONSTRUCTION

Corporate Information

Corporate Office

152 Golden Grove Road,
BWIA Boulevard,
Piarco,
Trinidad,
West Indies

Facilities Warehouse

O'Meara Industrial Estate,
O'Meara Road,
Arima,
Trinidad,
West Indies

Registered Offices

152 Golden Grove Road,
BWIA Boulevard,
Piarco,
Trinidad,
West Indies

100 North Bank Road
St. Helena Village,
Piarco,
Trinidad,
West Indies

kallco.co

Contact

Mr. Aeron Kalloo: Managing Director
Mr Arvin Kalloo: Chief Executive Officer
Mr Anurag Jha: Financial Controller

Registered Office

Tel: +1 (868) 669-7130; 669-1484
Fax: +1 (868) 669 -4581
Email: info@kallco.co
Website: kallco.co



Contents

History of the Company.....	1
Mission Statement.....	1
Vision Statement.....	1
Our Management Team.....	2
Key Deliverables.....	4
Personnel.....	5
Equipment.....	6
Portfolio.....	7
HSE Policy Statement.....	8
Contract Management Procedures.....	11
Safety Method Statement.....	12
General Statement of Policy.....	14
Contact Information.....	18
Appendix A: Company Organizational Chart.....	19
Appendix B: Equipment Listing.....	20
Appendix C: Past Projects & Reference List.....	21
Appendix D: Company Documents.....	22



History

Kall Company Limited was established on July 7, 2006 under the leadership of Mr. Aeron Kalloo. With headquarters located in Piarco, Trinidad and Tobago, Kallco provides superior services within the construction industry. Our goal is to exceed the expectations of every client by offering outstanding customer service, increased flexibility, and greater value, thus optimizing system functionality, and improving operation efficiency. Our associates are distinguished by their functional and technical expertise combined with their hands-on experience, thereby ensuring that our clients receive the most effective and professional service. Since its inception, Kallco has grown tremendously and strives to deliver its projects within the constraints of Quality, Time & Budget.



Mission Statement

To provide, effectively and consistently, quality service designed exclusively with the interest of our clients' requirements, as well as to execute all projects, effectively and expeditiously, in order to achieve the highest level of client satisfaction.

To achieve an above-average rate of return consistent with acceptable risk for our shareholders.

To provide our employees with a safe, worker-friendly environment and to facilitate continuous personal and professional development.

Vision Statement

Kallco aims to be a leader in providing value-added construction and general civil works to our customers by creating a successful partnership with them throughout the project life cycle. Our pledge is to establish lasting relationships with our customers by exceeding their expectations and gaining their trust through exceptional performance by every member of the professional team.

Our Management Team



Aeron Kalloo
Managing Director



Arvin Kalloo
Director, CEO



Eduardo Leiro
Country Manager, Guyana



Steve Frankie
Operations Manager



Nigel De Bourg
Chief Engineer



Anurag Jha
Financial Controller



Ferida Ramkissoon
Manager International Business Development



Vishal Maharaj
Construction Manager QA/QC



Anil Dadd
Project Manager



Garth Andrews
Project Engineer



Surin Cassie
Concrete Plant Manager



Key Deliverables

We are structured to deliver integrated solutions to suit our clients' needs by providing a range of construction services and equipment which include:

- Civil engineering, building construction
- Asphalt paving and road resurfacing
- Road reinstatement
- Overhead and underground electrical installation
- Supply and installation of plumbing and electrical systems
- Land and marine dredging
- Specialized drainage systems
- General underground installations
- Construction equipment rental
- Supply of aggregate
- Rental and leasing of small and heavy equipment
- Facilities maintenance
- Supply and installation of road safety and traffic management systems
- Bridge maintenance and construction
- Sandblasting
- Road marking
- Earthworks – backfilling and clearing of site
- Demolition works
- Suppliers of asphalt hot mix
- Suppliers of concrete



Personnel

Kallco has a full complement of professional and technical staff in all areas of civil engineering construction and management. In addition, the company has an experienced labor force to execute any project. Our construction and engineering consultants are equipped to provide technical and construction management advice, thus ensuring that all projects are completed at the highest standards, within budget and in a timely manner.

Kallco also has a full administrative and project department at its head office to support the operational and construction teams. Please refer to our organizational chart for more information.

Kallco also has an extensive health and safety department to meet the requirements of the OSH Act 2004.

Our team includes:

- Project managers
- Mechanical, electrical and civil engineers
- Site managers, site supervisors and construction technicians
- Safety managers
- Quality assurance/quality control staff
- Administrative and support staff
- Fitters, welders, machine operators and mechanics



Equipment

Throughout the years of its existence, Kall Co Ltd has acquired and have available the entire range of Civil and Mechanical Engineering equipment and plant.

The list of equipment includes:

- Excavators
- Backhoes
- Caterpillar bulldozers
- Asphalt spreaders
- Welding and fabricating equipment
- Other construction accessories such as scaffolding, lighting towers, man lift etc
- Hiab, Flat Bed, Dump and Tractor Trailer Trucks
- Cranes, Tug Boat, Barge, Dredge, Vacuum Pump etc.

Other specialized equipment is available as required. Please refer to attached Equipment List which can be found in the attached Appendix B.

Portfolio

Projects Completed and In Progress for:

- Airports Authority of Trinidad & Tobago (AATT)
- Angostura, Trinidad & Tobago
- Arima Borough Corporation, Trinidad & Tobago
- Carib Brewery, Trinidad & Tobago
- Central Tenders Board (CTB), Trinidad & Tobago
- Chaguaramas Development Authority (CDA), Trinidad & Tobago
- Chaguanas Regional Corporation, Trinidad & Tobago
- China Railway Construction Caribbean Company Limited
- Diego Martin Regional Corporation (DMRC)
- GrandBay Paper Products Ltd., Trinidad & Tobago
- Estate Management & Business Development Co. Ltd. (EMBD), Trinidad & Tobago
- Halliburton
- Land Settlement Agency (LSA)
- Ministry of Agriculture, Guyana
- Ministry of Agriculture, Land and Fisheries, Trinidad and Tobago
- Ministry of Education, Guyana
- Ministry of Education, Trinidad and Tobago
- Ministry of Public Works, Guyana
- Ministry of Rural Development & Local Government (RDLG)
- Ministry of Works and Transport (MOWT), Trinidad & Tobago
- National Insurance Property Development Company Limited (NIPDEC) under the PURE program (Trinidad & Tobago)
- National Maintenance Training and Security Co. Ltd. (MTS), Trinidad & Tobago
- National Commission for Self Help , Trinidad and Tobago
- National Quarries Company Ltd. (NQCL), Trinidad & Tobago
- The Trinidad & Tobago Housing Development Corporation (HDC)
- National Infrastructure Development Company Ltd (NIDCO), Trinidad & Tobago
- Port Authority of Trinidad and Tobago (PATT), Trinidad & Tobago
- Public Transport Service Corporation (PTSC), Trinidad & Tobago
- RHL Group of Companies
- Rural Development Company of Trinidad & Tobago (RDC)
- San Juan Regional Corporation, Trinidad & Tobago
- Sangre Grande Regional Corporation, Trinidad & Tobago
- Sinohydro Corp., China
- Trinidad & Tobago Electricity Commission (T&TEC)
- The Urban Development Corporation of Trinidad & Tobago Limited (UDeCOTT)
- University of the West Indies
- Superior Hotels of Trinidad and Tobago .
- Water and Sewerage Authority (WASA), Trinidad & Tobago
- Xtra Foods Ltd., Trinidad & Tobago

Financial Capability

Kallco has the financial capability and resources to carry out all projects on a turnkey basis.

General

The Management and Technical Staff are available to meet with all prospective clients at their convenience. Please refer to Appendix C to view past projects completed by Kallco.



HSE Policy Statement

Corporate Responsibility

Kallco requires every employee to adhere to governing laws and company policies with respect to Health, Safety and Environment (HSE). This policy establishes general ideals and principles towards a commitment to environmental responsibilities and best practices in health and safety. Through the implementation of this policy, Kallco will strive to be a leader in the advancement of health, safety and environmental management within our community, facilities and operations. To this end, we are guided by the following principles.

1. **To Guarantee our Commitment to Education and Continuous Improvement.** Kallco is committed to monitoring existing controls and to providing information and training to all our employees with regard to health and safety matters. Our company will ensure continuous improvement by actively seeking to use the information generated by the HSE system in order to improve the way the company functions.
2. **To Comply with HSE Policies.** Our company is committed to complying with all applicable health, safety and environmental rules and regulations. Where the existing rules and regulations are inadequate to ensuring the identification, evaluation and controls of work-related hazards affecting either the environment or the health and safety of our personnel, Kallco will amend our own health, safety and environmental quality standards.
3. **To Develop of a Culture of Safety.** It is the policy of Kallco, when engaged on or associated with any structural work or other project, to ensure that every reasonable and practical safeguard is implemented and that employees and authorized visitors comply with established safety rules, regulations and procedures.

All employees must share the responsibility for commitment to this policy and must, at all times, refer to the company's safety manual. Our company will continue to involve all employees in developing and continuing its HSE Program through consultation, participation, training and retraining.

This procedure applies to all contractual work and services based on our commitment to providing quality service to our valued clients.

Contract Management Procedures

Scope of Works

Our Contract Management Procedures commence with the Request for Proposals from clients, and associates. Based on the specifications of these requests we shall develop a scope of works in order to identify the parameters of the project to be undertaken. A review of the specifications of the project shall be undertaken by the Chief Executive Officer, Project Manager, Project Coordinator and Safety Officer to determine the Scope of Works. The Scope of Works shall outline the method of operation, engineering designs, quality and quantity of materials, the standards for quality, qualifications and certification, safety requirements as well as any other pertinent information that may be specified in the Request for Proposals.

Design Control

The Project Manager is responsible for all engineering designs as outlined in the RFP. Designs will be based on the client's stated requirements and internationally accepted engineering principles.

Quality Systems

As stated in our Scope of Works the quality of materials will be outlined for all aspects of the contract. The Project Manager is responsible for determining materials required and the quality of all works performed. We shall follow all guidelines as outlined in the standard for quality. All personnel undertaking skilled tasks must be qualified and certified to perform such tasks as stated in the Scope of Works. Any Contracted personnel will also be trained and tested to ensure they are in compliance with the quality standards for workmanship as outlined in the Scope of Works.



Safety Method Statement

The Safety Method Statement shall cover all tasks by occupation as outlined in the Scope of Works. Additionally, it shall cover all areas listed hereunder:

1. Welfare arrangements
2. Medical arrangements/first aid
3. Responsible persons
4. Access and egress
5. Applicable regulations and standards
6. Method of works/sequence of events
7. Temporary works
8. Job hazard analysis and risk assessments
9. Personal protective equipment
10. HAZCOMS
11. Equipment and tools
12. Material storage and handling
13. Specific safety rules
14. Rigging studies
15. Noise and environmental programs
16. Sub-contractor elements
17. Policies and procedures

These elements will be outlined in detail. It is the responsibility of the project manager and project coordinator, in conjunction with the HSE coordinator, to ensure that all aspects of the scope of works are analyzed, and that the Safety Method Statement addresses all concerns of the tasks by occupation to be undertaken by all personnel.

Inspection, Testing & Certification

As stated in the scope of works, all works outlined shall be inspected, tested and certified based on the quality standards and procedures required by the client.

All work shall be inspected by the project manager to verify quality and adherence to established company policy and procedure. Specialized work shall be tested and certified by an independent source to verify quality of workmanship and adherence to specification.

General Statement of Policy

It is Kallco's policy to provide a safe and healthy place of employment for all its employees, contractors and associates, as well as the public.

It is, therefore, the purpose of this policy to:

1. Abide by all local legislations, international regulations and standards and industry codes and practices as they pertain to the operations of Kallco.
2. Apply good sense and safe practices to all projects.
3. Exercise good judgment in the application of this policy.
4. Protect all employees, clients, associates and the general public from any hazards which may result from our operations.

To further these goals the following assignments of responsibility are made:

Management

1. Establish rules and programs designed to promote safety and to make known to all employees the established policies, rules and programs.
2. Provide all managers and supervisors with the appropriate policies, rules and regulations.
3. Ensure the necessary training of all employees to safely perform their tasks.
4. Provide PPE to all employees as required.
5. Impress upon all the responsibility and accountability of each individual to maintain a safe workplace.
6. Record any instances of violations, as well as investigate all accidents.
7. Discipline any employee disregarding this policy.
8. Require all subcontractors as a matter of contract and all material suppliers through purchase order terms to adhere to safety regulations.
9. Encourage all contractors to work safely.
10. Appoint a qualified safety officer with enforcement authority over safety issues.
11. Conduct safety inspections of all the company's jobsites, maintain records and continually monitor the program for effectiveness.

Project Manager, Project Coordinator & Safety Officer

1. Plan production schedules to ensure that all work is done in compliance with established environmental, health and safety regulations and company policies.
2. Be accountable for on-the-job safety, health and environment of personnel and to correct safety deficiencies.
3. Ensure proper safety materials and PPE are available and utilized and all equipment is in proper working order.
4. Instruct all supervisors in safety requirements.

General Statement of Policy (continued)

5. Review accidents, supervise correction of unsafe practices and file accident reports.
6. Conduct safety meetings and provide employees with proper instruction on safety requirements.
7. Require conformance to all safety standards from subcontractors.
8. Notify management of any safety violations.
9. Provide for the protection of the general public during construction operations.
10. Ensure safe performance by others present on jobsites, including clients, architects, engineers, visitors, employees, subcontractors and the general public.

Supervisors/Foremen

1. Carry out safety programs at the work level.
2. Be aware of all safety requirements and safe working practices.
3. Plan all work activities to ensure compliance with safe working practices.
4. Instruct new employees performing new tasks on safe working practices.
5. Install and maintain devices to protect the public during construction operations.
6. Ensure PPE is available and utilized properly.
7. Ensure work is performed in a safe manner and to eliminate unsafe conditions.
8. Correct all hazards including unsafe acts and conditions which are within the scope of their position.
9. Arrange prompt medical attention for any injured personnel.
10. Report all injuries and safety violations.

Workers

1. Work safely in such a manner as to ensure their own safety as well as that of coworkers and the general public.
2. Request assistance when unsure of how to perform a task in a safe manner.
3. Correct unsafe acts or conditions within the scope of the immediate work.
4. Report any unsafe acts or conditions to their appropriate supervisor.
5. Report for work in good mental and physical condition to safely carry out assigned duties.
6. Avail themselves of company and industry-sponsored safety programs.
7. Utilize and maintain all safety devices provided.
8. Maintain and properly use all tools under their control.
9. Follow all safety rules and regulations.
10. Provide assistance to coworkers with safety requirements.

All Personnel

1. Strive to make all operations safe.
2. Maintain good mental and physical health conducive to working safely.

General Statement of Policy (continued)

3. Keep all work areas clean and free of debris.
4. Assess results of individual actions on the entire workplace. Work will be performed in ways so as to prevent hazards to others.
5. Before leaving workplace, ensure safety precaution signs are removed or altered.
6. Abide by all safety rules and regulations on every jobsite.
7. Work in strict conformance with the company's policies and regulations.

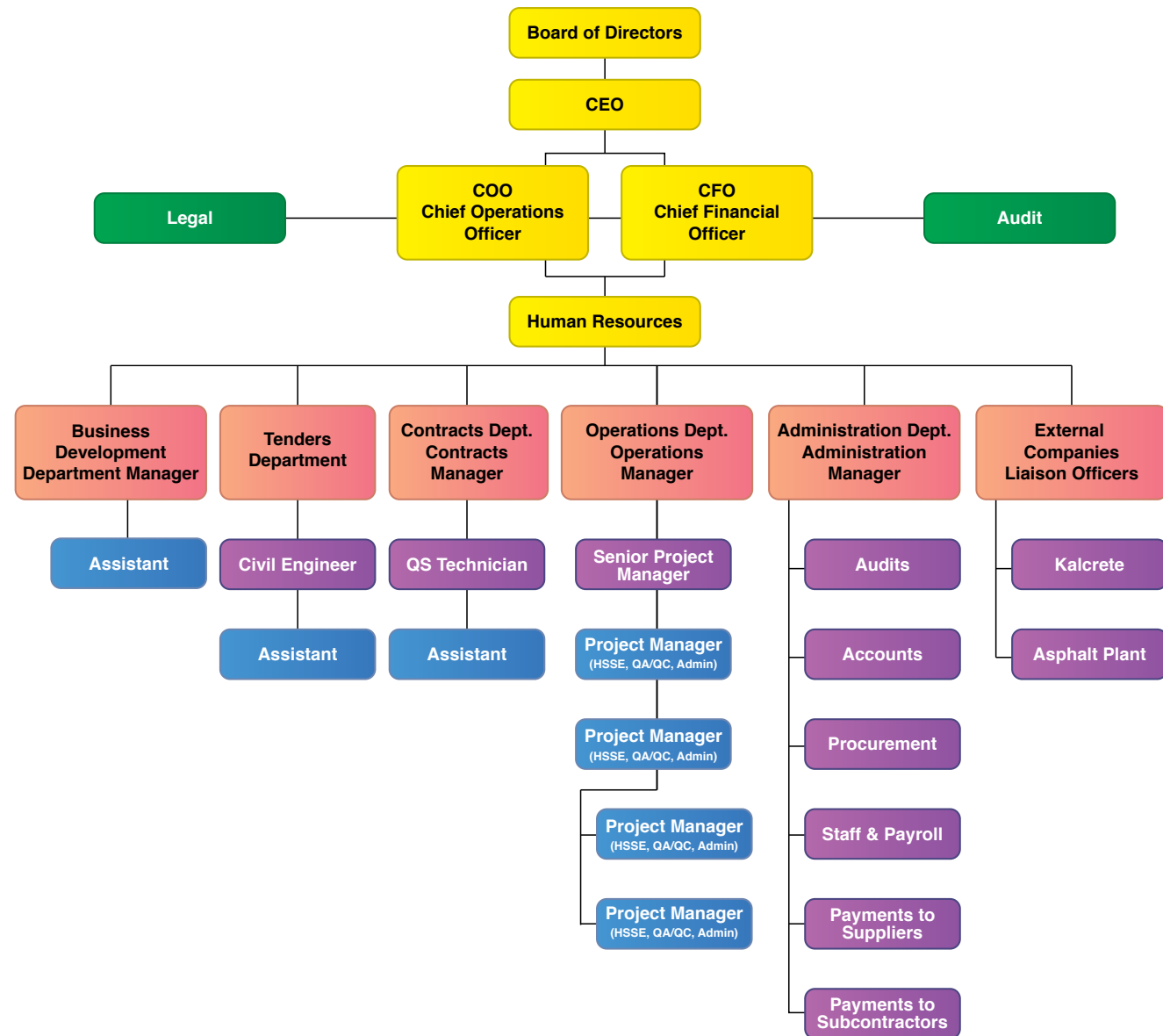
Subcontractors & Suppliers

1. Abide by all safety rules of contractors on jobsites.
2. Notify all others when their activities could affect the health and safety of any persons.
3. Notify appropriate company supervisors before entering jobsites.
4. Inform contractor of all injuries to workers.
5. Report to contractor any unsafe conditions that come to their attention.

Clients, architects and visitors shall be required to abide by all safety rules. They must inform site supervisor before entering a jobsite so that PPE may be provided as necessary.



Kall Co. Ltd. Organizational Chart



Plant, Equipment & Vehicles

Qty	Plant/Equipment/Vehicle	Make/Model	Asset Status
ASPHALT PLANT			
1	Asphalt Plant	Astec 150 Ton/Hr	Owned
1	Asphalt Plant	Astec 375 Ton/Hr	Owned
CONCRETE PLANT			
1	Concrete Plant	Con-E-Co	Owned
MECHANICAL GARAGES			
1	Mechanical Garage		Owned
1	Mechanical Garage		Owned
DUMP TRUCKS			
10	Dump Trucks	Mack	Owned
140	Dump Trucks	Mitsubishi	Owned
6	Dump Trucks	Isuzu	Owned
2	Dump Trucks	Nissan	Owned
24	25-Ton Trucks	Mitsubishi	Owned
15	Dump Trucks	Sino Truk	Owned
HIAB TRUCK			
1	Hiab Truck	Mitsubishi	Owned
SPRAY TRUCK			
1	Spray Truck	Mercedes-Benz	Owned
FLAT BED TRUCK			
2	Flatbed Truck	Mitsubishi	Owned
CONCRETE TRUCKS			
15	Concrete Trucks	Sino Truk	Owned
2	Concrete Trucks	Mack	Owned
5	Concrete Trucks	International	Owned
8	Concrete Trucks	Sterling	Owned
3-TON TRUCKS			
14	3-Ton Trucks	Mitsubishi	Owned
WATER TRUCKS			
8	Water Trucks	Mitsubishi	Owned
2	Hyundai H100	Hyundai	Owned
TRACTOR TRUCKS			
15	Tractor Trucks	Man/Mitsubishi	Owned
CONCRETE PUMP TRUCK			
1	Concrete Pump Truck	Mack	Owned
DREDGER			
1	Versi Dredger	5012 LP	Owned
TUG BOAT			
1	Tug Boat	Big Eddie	Owned
BARGE			
1	Barge	W-725	Owned

Plant, Equipment & Vehicles (continued)

Qty	Equipment	Make/Model	Asset Status
EXCAVATORS		KOBELCO	
#1	Excavator	Kobelco Y009U3376	Owned
#2	Excavator	Kobelco YQ09U4415	Owned
#3	Excavator	Kobelco YQ09U4664	Owned
#4	Excavator	Kobelco YQ09U4546	Owned
#5	Excavator	Kobelco YQ09U4668	Owned
#6	Excavator	Kobelco YQ093788	Owned
#7	Excavator	Kobelco Y009U3821	Owned
#8	Excavator	Kobelco YQ09U4446	Owned
#9	Excavator	Kobelco YC07U0913	Owned
#10	Excavator	Kobelco YQ09U4965	Owned
#11	Excavator	Kobelco YQ09U4992	Owned
#12	Excavator	Kobelco YQ09U4999	Owned
#13	Excavator	Kobelco YQ0842414	Owned
#14	Excavator	Kobelco NDDA25052	Owned
#15	Excavator	Kobelco NDDA25053	Owned
#16	Excavator	Kobelco NDDA25049	Owned
#17	Excavator	Kobelco NDDA25051	Owned
#18	Excavator	Kobelco NEDA 25020	Owned
#19	Excavator	Kobelco - Long Stick LL10-U1550	Owned
EXCAVATORS		CATERPILLAR	
#1	Excavator	CAT0320DCK07079	Owned
#2	Excavator	CAT0320DVA8F00451	Owned
#3	Excavator	CAT0320DKKGF05989	Owned
#4	Excavator	CAT0320DVA8F00434	Owned
#5	Excavator	CAT0312DPJC01367	Owned
#6	Excavator	CAT0321DVMDT00306	Owned
#7	Excavator	Long Stick - CAT0320LCANB3466	Owned
#8	Excavator	CAT0320DAA8F03304	Owned
#9	Excavator	CAT0320KGF09511	Owned
#10	Excavator	CAT0320DLKGF09628	Owned
#11	Excavator	CAT320DLKGF09784	Owned
#12	Excavator	CAT0322CEHEK00668	Owned
#13	Excavator	CAT0330DVMWP00331	Owned
#14	Excavator	CAT0318CEMDY00124	Owned
#15	Excavator	CAT0320DPBWZ03270	Owned
#16	Excavator	CAT0320DHPBB00230	Owned
#17	Excavator	CAT0312DLEAB00107	Owned
#18	Excavator	CAT0320DHA8F00432	Owned
#19	Excavator	CAT0320DLKGF06776	Owned
#20	Excavator	CAT0320DVA8F02572	Owned
#21	Excavator	CAT0323DCPBE03684	Owned

Plant, Equipment & Vehicles (continued)

Qty	Equipment	Make/Model	Asset Status
EXCAVATORS		CATERPILLAR (continued)	
#22	Excavator	CAT0336DJM4T01967	Owned
#23	Excavator	CAT0320DAA6F01581	Owned
#24	Excavator	CAT0336DCM4T01967	Owned
EXCAVATORS		CATERPILLAR - AMPHIBIOUS	
#1	Excavator	CAT0312CACAE00961	Owned
#2	Excavator	CAT0320DCKGF09505	Owned
#3	Excavator	CAT0318MDY00495	Owned
EXCAVATORS		JCB	
#1	Excavator	JCBJS22DJ81611945	Owned
#2	Excavator	JCB Engine #433726	Owned
#3	Excavator	JCBJS220T81612044K	Owned
#4	Excavator	JCBJS20CA01782942	Owned
#5	Excavator	JCBJS20CJ01920037	Owned
#6	Excavator	JCB JCBJS20CC01920041	Owned
#7	Excavator	JCB JS20CL01782876	Owned
#8	Excavator	JCB JS20CC01782879	Owned
#9	Excavator	JCB JSCJS20CC01782882	Owned
#10	Excavator	JCB JS20CE01782881	Owned
#11	Excavator	JCB JS30CH01782877	Owned
#12	Excavator	JCB JS20CC01782880	Owned
MINI EXCAVATORS		CATERPILLAR	
#1	Excavator	303C CAT0303CCBXT04763	Owned
#2	Excavator	303C CAT0303CKBXT04405	Owned
#3	Excavator	303.5 C CAT03035DHRHP00277	Owned
#4	Excavator	304 CAT00304ENAD03069	Owned
#5	Excavator	305C CAT0305CJHWJ03620	Owned
#6	Excavator	307D CAT0307DEDSE00363	Owned
#7	Excavator	308 CAT0308DHFYCO1837	Owned
#8	Excavator	308 CAT0308DHGBT00708	Owned
BACKHOES		CATERPILLAR	
#1	Backhoe	TCE3845 SN#7BJ68722 CAT0416DABFP05939	Owned
#2	Backhoe	TCW 1228 JBA02146	Owned
#3	Backhoe	TCT2291 CAT0432EERXS00504	Owned
#4	Backhoe	TCS9454 CAT0428EJBXC00670	Owned
#5	Backhoe	TCT3534 SN#CRS62846 CAT0428EJDPH01607	Owned
#6	Backhoe	TCX5614 CAT0432EVJBA02259	Owned
#7	Backhoe	4X4 TCU7315 CAT0444ETNBA00304	Owned
#8	Backhoe	TCZ 9547 JBA00888	Owned
#9	Backhoe	TCZ 9312 CAT0432EAJBA01002	Owned

Plant, Equipment & Vehicles (continued)

Qty	Equipment	Make/Model	Asset Status
BACKHOES			
		JCB	
#1	Backhoe	JCB TCN 7465	Owned
#2	Backhoe	JCB. SEL # SLP214TC540905541 TCU 4116	Owned
#3	Backhoe	JCB TCY 3641	Owned
#4	Backhoe	JCB SEL # 02108111 TCY 1244	Owned
#5	Backhoe	JCB (MINI) 1 CX JCB1CXWSJ01743823	Owned
#6	Backhoe	JCB TDH 7402 JCB3CXCSK02269281	Owned
BACKHOES			
		NEW HOLLAND	
#1	Backhoe	New Holland TCH 7485	Owned
#2	Backhoe	New Holland TCK 3333	Owned
#3	Backhoe	New Holland TCS 7135	Owned
SMALL ROLLERS			
#1	Small Roller	Wacker 5741229	Owned
#2	Small Roller	Wacker 5541177	Owned
#3	Small Roller	Wacker 202441600	Owned
#4	Small Roller	Wacker 10115IE11	Owned
#5	Small Roller	BOMAG D66154	Owned
#6	Small Roller	CAT CB 24 CAT0CB24P2401419	Owned
#7	Small Roller	CAT CB24 E CATCB24E24001360	Owned
#8	Small Roller	CAT CB 24 CATCB24E24002081	Owned
#9	Small Roller	CAT CB 334 E CATCB334HC3A00201	Owned
#10	Small Roller	CAT CB24 CATCB24E24002078	Owned
#11	Small Roller	CAT CB 214 CATCB214E21400362	Owned
#12	Small Roller	CAT CB 24 CATCB2424001843	Owned
#13	Small Roller	CAT CB 24 CAT0CB24K24001839	Owned
#14	Small Roller	CAT CB334 CAT0CB34L135400682	Owned
#15	Small Roller	CAT CB24 CAT0CB24G24000547	Owned
WALK-BEHIND ROLLERS			
#1	Walk-Behind Roller		
BIG ROLLERS SINGLE DRUMS			
#1	Big Roller	Dynapac CA260 6582US5672	Owned
#2	Big Roller	Dynapac 10000111COD007666	Owned
#3	Big Roller	JCB Vibromax 10603-3-72	Owned
#4	Big Roller	Chinese 20080240	Owned
#5	Big Roller	CAT CS 533 E CATCS533E15E02905	Owned
#6	Big Roller	CAT CS 533E CATCS533EBZE01280	Owned
#7	Big Roller	CAT CS 563 D CATCS563D9MW00155	Owned
#8	Big Roller	CAT CS 533 CATCS533HBZE02900	Owned
#9	Big Roller	CAT CS54 CATCS54C5R00274	Owned
#10	Big Roller	CAT CS533E CATCS533ETJL01600	Owned
#11	Big Roller	CAT CS533 CATCS533ABZE03025	Owned
#12	Big Roller	CAT CS533 CATCS533LTJL01481	Owned

Plant, Equipment & Vehicles (continued)

Qty	Equipment	Make/Model	Asset Status
BIG ROLLERS SINGLE DRUMS (continued)			
#13	Big Roller	CAT CS533 CATCS533CBZE02169	Owned
#14	Big Roller	CAT CA533 E CATCS533CDAK00611	Owned
#15	Big Roller	CAT CS533 with Sheep Foot CATCS533PASL00412	Owned
#16	Big Roller	CAT CA533 E CATCS533EHASL03787	Owned
#17	Big Roller	CAT 533 CATCS533VBZE02584	Owned
DOUBLE DRUMS			
#1	Big Roller	Dynapac CC384 10000319KOA004628	Owned
#2	Big Roller	CAT CB 434 CATCB434VCNH00483	Owned
#3	Big Roller	CAT CB 434 CATCB434CCN1101180	Owned
#4	Big Roller	CAT CB 54 JML00263	Owned
#5	Big Roller	Pneumatic - Wheel 2163BR2425	Owned
#6	Big Roller	CAT Wheel Roller CATPS360APJF00495	Owned
SHEEP FOOT			
#1	Big Roller	Sheep Foot 9ZW00250	Owned
#2	Big Roller	Sheep Foot CATCP433LCFK00200	Owned
#3	Big Roller	Sheep Foot CATCP563CCNTOO261	Owned
#4	Big Roller	Sheep Foot CATCP533ABZG01296	Owned
#5	Big Roller	Sheep Foot CATCP533LBZG01297	Owned
#6	Big Roller	Sheep Foot CATCP533HBZG01298	Owned
#7	Big Roller	Sheep Foot CATCP533CDZG01305	Owned
TRACTORS			
#1	Tractor	D3 D3GXL CAT 00D3GHJMH01336	Owned
#2	Tractor	D4 GXL CAT00D4GPFDC00393	Owned
#3	Tractor	D6 D6N LGP CAT00D6NPALY00726	Owned
#4	Tractor	D6 D6K LGP CAT00D6KADHA00810	Owned
#5	Tractor	D6 N CAT00D6NLDJY00685	Owned
#6	Tractor	D8T D8T2066783 /PAG4C2959	Owned
#7	Tractor	D6 D6M LGP CAT0006MC2RN00929	Owned
#8	Tractor	D6 D6M LGP X 4JN00765	Owned
#9	Tractor	D6 D6 K CAT00D6KKDHA00049	Owned
#10	Tractor	D7 M LGP 110743	Owned
#11	Tractor	D6 N LGP CAT00D6NLYD2059	Owned
#12	Tractor	D3 G CAT00D3GCJMH02313	Owned
#13	Tractor	D4 GXL CAT00D4GPCFN01016	Owned
#14	Tractor	CAT D6 RXL CAT00D6RCAAX00323	Owned
#15	Tractor	CAT D6 N CAT0026NTDJY00787	Owned
#16	Tractor	CATD6T XL TXD002050	Owned
#17	Tractor	CAT D4K CAT000D4KTRRR00308	Owned
#18	Tractor	CAT D4G CAT00D4GKTLX00540	Owned
#19	Tractor	CAT D4G CAT00D4GEHYD01196	Owned
#20	Tractor	CAT D6N CAT00D6NVALY02594	Owned

Plant, Equipment & Vehicles (continued)

Qty	Equipment	Make/Model	Asset Status
TRACTORS (continued)			
#21	Tractor	D6 RXL CAT00D6RCAAX00721	Owned
#22	Tractor	D4K CAT0D3K2PKLL00173	Owned
#23	Tractor	CATD6TXL CAT00D6TPLAE00701	Owned
#24	Tractor	CATD6TXL CAT00D6TJLAE00698	Owned
#25	Tractor	JOHN DERE. 850J IT0850JXACC225610	Owned
#26	Tractor	D6TXL CAT006TCLAE00758	Owned
#27	Tractor	D6TXL CAT006THLAE00739	Owned
#28	Tractor	D6T CAT00TPLKJ00664	Owned
#29	Tractor	D6T CAT006TPLKJ00700	Owned
#30	Tractor	D6 CAT006TLLAE00741	Owned
#31	Tractor	D6T CAT006TCLAE00744	Owned
#32	Tractor	D6TXL CAT006TELAE00734	Owned
SKID STEERS			
#1	Skid Steer	CAT 257 B2 CAT0257BVSLK09145	Owned
#2	Skid Steer	Bobcat T320 A7MP62125	Owned
#3	Skid Steer	New Holland L218 NAM415532	Owned
#4	Skid Steer	New Holland L170 87572965	Owned
#5	Skid Steer	New Holland 95 NAM4555513	Owned
#6	Skid Steer	CAT CAT0257BLSK09150	Owned
#7	Skid Steer	Bobcat 87A 522211320	Owned
#8	Skid Steer	CAT 277B CAT0277BCMDH04545	Owned
#9	Skid Steer	CAT 287 B CAT0287BEZSA04063	Owned
#10	Skid Steer	CAT /257 B CAT0257BLSLK01436	Owned
#11	Skid Steer	New Holland NCM448001	Owned
#12	Skid Steer	New Holland NCM447889	Owned
#13	Skid Steer	New Holland NCM448238	Owned
#14	Skid Steer	New Holland NAM415449	Owned
#15	Skid Steer	CAT 246C CAT046CHJAY07349	Owned
MILLING MACHINES			
#1	Milling Machine	Miller	Owned
#2	Milling Machine	Fraser 12200528	Owned
ASPHALT SPREADERS			
#1	Asphalt Spreader	CAT AP 1055 B - Single Steering ABB00270	Owned
#2	Asphalt Spreader	CAT AP 1055 D - Double Steering FAC00862	Owned
#3	Asphalt Spreader	Ingersoll 187528	Owned
#4	Asphalt Spreader	Ingersoll 178712	Owned
#5	Asphalt Spreader	Dynapac Trencher 100021009V0G000662	Owned
#6	Asphalt Spreader	Ingersoll 183953	Owned
#7	Asphalt Spreader	SALSO ?14022400050260356	Owned
#8	Asphalt Spreader	CAT AP 1055 B CATAP105AABB00521	Owned
#9	Asphalt Spreader	INGERSOL - YELLOW 182846	Owned

Plant, Equipment & Vehicles (continued)

Qty	Equipment	Make/Model	Asset Status
ASPHALT SPREADERS (continued)			
#10	Asphalt Spreader	CAT 655D GNZ00232	Owned
#11	Asphalt Spreader	CAT AP 1055 B *98Z20481* *8BM00175	Owned
#12	Asphalt Spreader	CAT AP 1000D (Rubber Wheel)	Owned
#13	Asphalt Spreader	CATAP100CEAD00148	Owned
CRANES			
#1	Crane	Grove 30-Ton 71887	Owned
#2	Crane	Grove 80-Ton 228194	Owned
ROAD BROOMS			
#1	Road Broom	Broom BB250-B	Owned
WHEEL LOADERS			
#1	Wheel Loader	New Holland W 190 B	Owned
#2	Wheel Loader	Caterpillar 950H CAT0950HTK5K09243	Owned
#3	Wheel Loader	Caterpillar 938G CAT0938GJRTB02259	Owned
#4	Wheel Loader	Chinese ZL50G A0805070AH0806002	Owned
#5	Wheel Loader	Caterpillar 950H CAT0950HEN1A03097	Owned
#6	Wheel Loader	Caterpillar 950H CAT0950HTMIG02342	Owned
MOTOR GRADERS			
#1	Motor Grader	New Holland	Owned
#2	Motor Grader	Volvo G726 VHP X034076X	Owned
#3	Motor Grader	CAT CGE 10580/B9F00400	Owned
#4	Motor Grader	CAT 140M CAT0140MJB9D03967	Owned
TRAILERS			
#1	Trailer	Gooseneck	Owned
#2	Trailer	Gooseneck	Owned
#3	Trailer	Black Low Boy	Owned
#4	Trailer	Red Low Boy	Owned
#5	Trailer	Red Low Boy	Owned
#6	Trailer	Green Small	Owned
#7	Trailer	Black Small	Owned
#8	Trailer	Red Tilt	Owned
#9	Trailer	TDA-9066 NEW 5VGFD1621DL004514	Owned
#10	Trailer	TDA-9067 NEW 5VGFD162XDL003929	Owned
#11	Trailer	Trail-Eze 1DA72C7787C018333	Owned
#12	Trailer	Trail-Eze IDA72C7787COI8329	Owned
WACKER PLATES			
#1	Wacker Plate	Ingersoll-Rand	Owned
#2	Wacker Plate	VP 1550	Owned
#3	Wacker Plate	Wacker Fusion 313000164	Owned
#4	Wacker Plate	Wacker Fusion 5389461	Owned
#5	Wacker Plate	Wacker Fusion	Owned
#6	Wacker Plate	3619175	Owned

Plant, Equipment & Vehicles (continued)

Qty	Equipment	Make/Model	Asset Status
WELDING PLANTS			
#1	Welding Plant	Plan Miller LG653134	Owned
#2	Welding Plant	Plan Miller LE376275	Owned
#3	Welding Plant	Plan Miller LG073706	Owned
#4	Welding Plant	Plan Miller LG102921	Owned
#5	Welding Plant	Plan Miller LG073629	Owned
#6	Welding Plant	Plan Lincoln AC/DC 993782L	Owned
#7	Welding Plant	Miller 12226	Owned
#8	Welding Plant	Miller GN71032N	Owned
LIFTS			
#1	Lift	Manlift 800S 80FT 300059669	Owned
#2	Lift	Manlift 600S 60FT 0300051157	Owned
#3	Lift	Scissors	Owned
#4	Lift	Scissors 02000115724	Owned
#5	Lift	Scissors 02000129437	Owned
SIGN BOARDS			
#1	Sign Board	Allmand Arrow 5F115101581005616	Owned
#2	Sign Board	Allmand Multi 0173AB08	Owned
#3	Sign Board	Allmand Multi 0176AB08	Owned
#4	Sign Board	Allmand Multi 412014	Owned
#5	Sign Board	Allmand Multi	Owned
COMPRESSORS			
#1	Compressor	Ingersoll-Rand - Green P185WJD72007	Owned
#2	Compressor	Ingersoll-Rand P185WJD1997/E	Owned
#3	Compressor	Ingersoll-Rand	Owned
#4	Compressor	Honda GX160 G20D54S0163N2A	Owned
GENERATORS			
#1	Generator	Yamar F120308802	Owned
#2	Generator	Yamar F120308777	Owned
#3	Generator	Generic XQ168F1143044056	Owned
#4	Generator	Generic XQ168F11140304046	Owned
#5	Generator	Perkins RS60140 BS108504	Owned
#6	Generator	AJ Power 1614110	Owned
PRESSURE WASHER			
#1	Pressure Washer	Yanmar L100N6CF1T1AAMS	Owned
#2	Pressure Washer	Yanmar L70N6CF1T1AAMS	Owned
RANSOME			
#1	Pressure Washer	Belle PM91202949	Owned
#2	Pressure Washer	Belle PM81624563	Owned
#3	Pressure Washer	Belle	Owned







Projects Successfully Completed (2013–2020)

2020
GrandBay Paper Products Ltd. (2020)
Paving of GrandBay Car Park
Housing Development Corporation (HDC) (2020)
Road & Drainage Infrastructure Works at HDC Corinth - Site A
Emergency Cleaning of Roadways at Greenvale Park, La Horquetta
Emergency Cleaning of Roadways at Oropune Gardens, Piarco
Flood Mitigation at Oropune Gardens, Piarco
Flood Mitigation at Greenvale Park, La Horquetta
Paving Works at Peas Tree Housing Development, El Dorado
Speed Humps at Hill Crest Gardens
Ministry of Agriculture, Land and Fisheries (2020)
Road Rehabilitation at Plum Mitan
Repairs to Roadway at La Pastora Plant
Ministry of Works and Transport (MOWT) (2020)
Upgrade of Gate Structures at Trantrill Road
Road Paving & Strengthening at Naparima-Mayaro Road
Road Rehabilitation on Buen Intento Road
National Commission For Self-Help Ltd. (NCSHL) (2020)
Paving of Church Yard Cornerstone, La Horquetta
National Insurance Property Development Co. Ltd. (NIPDEC)/ Programme For Upgrading Roads Efficiency (PURE) (2020)
GW 880 - Methuen Street
GW 894 - Upper Serraneau Road
VW 492 - Manjack Extension
VW 495 - Victoria Village
VW 496 - Mohammed Drive
GW 888 - Mary Avenue
VW 497 - Church Street
VW 489 - Naparima Mayaro Road
GW 886 - Seaview Gardens
GW 889 - Wallace Road
GW 890 - Singles Lane
GW 891 - Pitch Road
GW 893 - Upper Wharton Street
GW 895 - Point Pleasant Park
STP 452 - Salazar Trace Pkg. 1
STP 453 - Salazar Trace Pkg. 2
GW 907 - Sandy Road
GW 905 - Clovis Trace
GW 906 - Celestine Trace
GW 896 - Rock City Circular
STP 451 - SS Erin Road

Projects Successfully Completed (continued)

2020
(NIPDEC)/(PURE) (2020) (continued)
GW 883 - Ann Avenue
GE 505 - Blanchisseuse Pkg. 2
GE 522 - Mandarine Circle
GW 935 - PTSC Compound
GW 915 - Thompson Lane
GW 927 - St. Francois Valley Road
GW 928 - Las Cuevas Road
GW 914 - Cicada Drive
GW 932 - Quarry Road
GE 506 - Corner Lime Blvd. & Balata Ave.
GW 918 - King Street
GW 939 - Crichlow Hill
GW 943 - Map Land
GW 946 - Wharton Street
GW 951 - Diego Martin Main Road
GE 539 - Railway Road
GE 541 - Eastern Main Road
STAD 330 - Toco Road Patching Works
GW 938 - Bagatelle Road
GW 941 - Oliver Street
STP 454 - Southern Main Road
STAD 328 - Toco Road Phase 3 - Foam Works
GW 975 - Rich Plain
GW 984 - Grand Curacaye Road
GW 979 - Oasis Gardens
GW 936 - Pine Avenue
GE 543 - Ragbir Street
GE 551 - Peytonville Ext.
GE 550 - Brazil Lome Branch Trace
GW 971 - La Estancia
GW 972 - Crystal Heights
GW 973 - Maraj Drive
GW 974 - Fitz Allen Drive
GW 985 - Providence Estate
GW 965 - School Drive
GW 977 - Juniper Street
GW 978 - Cajuca Street
GW 961 - Hillview Road
GW 981 - Andalusia Pkg. 2
GW 963 - Cuthbert Circular
GW 964 - Union Road

Projects Successfully Completed (continued)

2020
(NIPDEC)/(PURE) (2020) (continued)
GW 970 - Hillview Drive Pkg. 2
GE 559 - Righteous Lane
STP 456 - Cemetery Block Road
STP 457 - Southern Main Road
GW 976 - La Horquette Branch Road
GE 563 - Ian & Barbara Street Ext.
GE 565 - Sunset Drive & Extension
GE 562 - Eastern Main Road, Tunapuna
CR 644 - Caparo Valley Brasso Road
CR 645 - Southern Main Road
GW 919 - St. Joseph Street
Public Transport Service Corporation (PTSC) (2020)
Refurbishment Works at PTSC Operations Dept., South Quay
Repainting of the San Juan & Curepe Terminal Mall Facilities
RHL Group of Companies (2020)
Asphalt Repairs to Casino Entrance, South Park
Rural Development Company of Trinidad & Tobago (RDC) (2020)
Road Rehabilitation Works at Upper Thomasine Street, Laventille
Road Rehabilitation & Drainage Works at Big Yard Carenage
Road Rehabilitation & Drainage Works at Samuel Street off Moruga Road, Basseterre
Drainage Works to Outfall Drain at Beetham Gardens Phase IV
Road Rehabilitation & Drainage Works at Febeau Street
Upgrade Works at Recreation Grounds in Community Drive, Mt D'or
Construction of Bridge at LP# Slie Farm Road, Diego Martin
Retaining Wall at Second Hamlet Trace off St. Barb's Road, Belmont
Road Rehabilitation Works at Terracita Drive & Hutton Road, Port of Spain
Road Rehabilitation Works at Hutton Road, Port of Spain
The Sports Company of Trinidad & Tobago (SPORTT) (2020)
Plumbing Upgrade Works at Hasley Crawford Stadium
The Urban Development Corporation of Trinidad & Tobago Limited (UDeCOTT) (2020)
Paving & Renovation of Car Park at Red House Project
Xtra Foods Ltd. (2020)
Infrastructure Works at Xtra Foods, Guaico

Projects Successfully Completed (continued)

2019
Carib Brewery Ltd. (CBL)
Paving of Carpark B
Site Drainage Phase 1
Chaguaramas Development Authority (CDA)
Road Rehabilitation Airway Road
Central Tenders Board (CTB)
Hire of mechanical vehicles on & when required
Diego Martin Regional Corporation (DMRC)
Resurface of roadway waterhole, Cocorite
Housing Development Corporation (HDC)
Development of football field at HDC Greenvale Park
Installation of speed humps, various locations
Land Settlement Agency (LSA)
Civil Works at Bois Sande, Sangre Grande
Ministry of Agriculture, Land & Fisheries
Road Rehabilitation at Romain Trace
Ministry of Rural Development & Local Government (RDLG)
Road Rehabilitation at East-West Corridor
Ministry of Works & Transport (MOWT)
Desilting of the Cunapo River
Desilting of underground drains, CHRH
Milling & Paving along SS Erin Road
Strip Paving Works along North Coast Road
Strip Paving Works along North Coast Road La Fillette
Repairs to Bridge Joint Beetham Highway
Resurfacing of Sir Solomon Hochoy Highway
Milling & Paving along Sir Solomon Hochoy Highway, Wallerfield
Strip Paving along La Fortune Pluck Road
Strip Paving along M2 Ring Road
National Insurance Property Development Co. Ltd. (NIPDEC)/
Programme For Upgrading Roads Efficiency (PURE)
GW 850 - Faustin Trace
ST AD 293 - Toco to Valencia
GW 861 - Dibe Road
ST AD 296 - Didier Trace
ST AD 301 - Moolchan Street
ST AD 303 - Velasquez Road
ST AD 306 - Railway Road Ext. #2
ST AD 307 - Railway Road Ext. #3
STAD 313 - London Trace
ST AD 314 - Fishing Pond Road
VW 483 - BLCA, T&TEC - Brian Lara

Projects Successfully Completed (continued)

2019
(NIPDEC)/(PURE) (2019) (continued)
ST AD 311 - Picton Road Extension
STAD 317 - Jairasingh Road
GW 901 - North Post Road
GW 902 - Upper Saut D'eau Road
GW 904 - Moraldo Street
GW 899 - Sieudass Trace
Port of Spain City Corporation (2019)
Road Rehabilitation at Western Cemetery
Public Transport Service Corporation (PTSC) (2019)
Transport of aggregate from OAS to Wallerfield
Rural Development Company of Trinidad & Tobago Ltd. (RDC) (2019)
Silver Stream Road Rousillac - Drainage & Road Restoration
High Road Point Dor La Brea-Road Rehabilitation
Lodge Street Dor La Brea -Road Rehabilitation
Crest Camp Road - Road Rehabilitation
High Road Junction Point Dor La Brea - Desilting Works
Black Heart Road Rousillac - Road Rehabilitation Works
Carrot Shed Beach Road Point Dor La Brea - Road Rehabilitation Works
Bridge at Reservior Road La Pastora
Retaining Wall at Hindustan
Retaining Wall at Laventille
Road Works Cleghorn Lane
Access Road at West Park Savannah
Road Works at Kerr Road
Road Works at La Estancia
Drainage Works at Mercer
Drainage Works at Moore Avenue
Road Works at Prizgar
Road Works at Sarganger
Road Works on Universal Drive
Water & Sewerage Authority (WASA) (2019)
Excavation & Road Restoration along Beetham Highway

Projects Successfully Completed (continued)

2018
NIPDEC/PURE (continued)
GE - 481 - 5th Street Oropune Gardens (Road Works)
GE - 488 - Riverside Road (Concrete & Road Works)
GE - 496 - La Resource Road (Drainage & Road Works)
GW - 788 - St. Lucien Road (Road Works)
GW - 789 - Hill View Street (Road Works)
GW - 790 - Constabulary Street (Drainage & Road Works)
GW - 792 - Mt. Olive Drive (Concrete & Road Works)
GW - 801 - Africa Road (Concrete & Road Works)
GW - 802 - Annisette Road (Drainage & Road Works)
GW - 804 - Saddle Road - (Road Works)
GW- 812 - Upper Covignee Road (Concrete & Road Works)
GW - 793 - Romain Lands (Road Works) off Lady Road Morvant
GW - 795 - Rudolph Charles Link Road (Road Works) off Chocolate Alley Belmont
GW - 797 - Hillside Avenue (Drainage & Road Works) off Pomme Rose Avenue off St Ann's Main Rd
GW - 798 - Hololo Road (Drainage & Road Works) off Hillcrest Ave off St Ann's Main Rd
GW - 800 - Augustine Lane (Road Works) off Belleau Road Belmont
GW - 803 - Production Drive & Development Drive (Drainage & Road Works) off Beetham Highway
GW - 820 - Sou Sou Lands (Concrete Drainage & Road Works) off La Ventille Road San Juan
GW - 821 -Crosswinds Boulevard (Concrete & Road Works) La Pastora Santa Cruz
GW - 834 - Saut Deau Road (Drainage & Road Works) Lower Saut D'eau Rd to Fatima Trace
NM - I28 - Naparima Mayaro Road (Cement Stabilization Works) from 31 Km Poole Bridge to 32km
CR - 634 - Thompson Road (Road Works) Off Caparo Valley Brasso Road
VW - 473 - Aripo St (Concrete, Drainage & Road Works) off Grange Dr Taradale Gardens, San F'do
San Juan Regional Corporation (2018)
Resurface Straker Basketball Court
Sangre Grande Regional Corporation (2018)
Paving Works at Anthony Trace
Paving Works at Pasea Street
Paving Works at Skinner Street

Projects Successfully Completed (continued)

2018
NIPDEC/PURE (continued)
GE - 481 - 5th Street Oropune Gardens (Road Works)
GE - 488 - Riverside Road (Concrete & Road Works)
GE - 496 - La Resource Road (Drainage & Road Works)
GW - 788 - St. Lucien Road (Road Works)
GW - 789 - Hill View Street (Road Works)
GW - 790 - Constabulary Street (Drainage & Road Works)
GW - 792 - Mt. Olive Drive (Concrete & Road Works)
GW - 801 - Africa Road (Concrete & Road Works)
GW - 802 - Annisette Road (Drainage & Road Works)
GW - 804 - Saddle Road - (Road Works)
GW- 812 - Upper Covignee Road (Concrete & Road Works)
GW - 793 - Romain Lands (Road Works) off Lady Road Morvant
GW - 795 - Rudolph Charles Link Road (Road Works) off Chocolate Alley Belmont
GW - 797 - Hillside Avenue (Drainage & Road Works) off Pomme Rose Avenue off St Ann's Main Rd
GW - 798 - Hololo Road (Drainage & Road Works) off Hillcrest Ave off St Ann's Main Rd
GW - 800 - Augustine Lane (Road Works) off Belleau Road Belmont
GW - 803 - Production Drive & Development Drive (Drainage & Road Works) off Beetham Highway
GW - 820 - Sou Sou Lands (Concrete Drainage & Road Works) off La Ventille Road San Juan
GW - 821 - Crosswinds Boulevard (Concrete & Road Works) La Pastora Santa Cruz
GW - 834 - Saut Deau Road (Drainage & Road Works) Lower Saut D'eau Rd to Fatima Trace
NM - I28 - Naparima Mayaro Road (Cement Stabilization Works) from 31 Km Poole Bridge to 32km
CR - 634 - Thompson Road (Road Works) Off Caparo Valley Brasso Road
VW - 473 - Aripo St (Concrete, Drainage & Road Works) off Grange Dr Taradale Gardens, San F'do
San Juan Regional Corporation (2018)
Resurface Straker Basketball Court
Sangre Grande Regional Corporation (2018)
Paving Works at Anthony Trace
Paving Works at Pasea Street
Paving Works at Skinner Street

Projects Successfully Completed (continued)

2017
Airports Authority
Carpark Reconfiguration Piarco International Airport
Central Tenders Board
Rental Of Heavy Equipment
Land Settlement Agency
Squatter Regularisation Programme Ackbarali Trace
Squatter Regularisation Programme Picton Sangre Grande
Ministry Of Rural Development & Local Government (RDLG)
Teesdale Avenue Mayaro
Ministry Of Works
Asphalt Paving Works at Wrightson Road Port Of Spain
Asphalt Paving Works at West North Ramp Onto Maraval
Construction of Southern Exit Brian Lara Stadium
Construction of Concrete Cylinder Crossing Diego Martin Highway
Milling & Paving Works at Cross Crossing Victoria District
Road Works Hillcrest Rod La Puerta Diego Martin
NIDCO
San Souci Shoreline Stabilization Works
National Insurance Property Development Co. Ltd. (NIPDEC)
GW 786 - Upper Quarry Drive
VE 235 - Moruga Concrete & Drainage Works
Rural Development Company of Trinidad & Tobago Ltd. (RDC)
Rehabilitation of Saunders Trace from Moruga Road to Guayaguayare
San Juan Regional Corporation
Drainage Programme - Shende Trace Extension
Drainage Programme - Shende Trace
Drainage Programme - Upper Bushe Street
Road Works - Bruno Road
Road Works - Cajuca Street
Road Works - Eighth Avenue
Road Works - Ramlal Street

Projects Successfully Completed (continued)

2016
NIPDEC
GW 720 - Davidson Lane Programme for Upgrading Road Efficiency
GW 751 - Abbepoujade Programme for Upgrading Road Efficiency
Rural Development Company of Trinidad & Tobago Ltd. (RDC)
Rehabilitation of Saunders Trace from Moruga Road to Guayaguayare
San Juan Regional Corporation
Car Park Area Rock City
Kelly Village Success Village
Crichlow Trace Extension
SDA Hill
Counsel Man Extension
Link Rod Between Cipriani & Ninth Avenue
Bullet Hill
Tunapuna Regional Corporation
Roadworks
2015
Estate Management & Business Development Co. Ltd. (EMBD)
Felicity Main Gravel Road to Perseverance Road - Infrastructure Works
Todd's Road Gravel Road - Infrastructure Works
New Colonial Road Project - Infrastructure Works
HDC
Refurbishment of Roads, Drains & Sides Walks at Maloney Gardens
Refurbishment of Roads, Drains & Sides Walks at Golconda Phase L
Refurbishment of Roads, Drains & Sides Walks at Oropune Gardens
Land Settlement Agency (LSA)
Land for the Landless Residential Lots Programme Corinth Village
Corinth Site C - Infrastructure Development Works
National Insurance Property Development Co. Ltd. (NIPDEC)
Construction of Chaconia Crescent Development External Works
HDC
Refurbishment Of Roads, Drains & Sides Walks At Maloney Gardens
San Juan Regional Corporation
Road Works & Paving Works At Various Roads
Sangre Grande Regional Corporation
Supply Transport Spread and Roll Hot Asphalt at Seechandra Park Road

Projects Successfully Completed (continued)

2014
EFCL
Design Build Services for the Penal/Quinam GPS
Estate Management & Business Development Co. Ltd. (EMBD)
Rehabilitation of Roads- Cottage Road Project
Rehabilitation of Roads - Debe Project
Rehabilitation of Roads- Edinburgh Project
Rehabilitation of Roads - Ghandi Village Project
Ministry of Works & Transport (MOWI)
Road Works, Paving Works and Box Drains etc
Replacement Patching Cunapo Southern Road
NIDCO
Diego Martin Phase 4B Highway Expansion Project
Mausica River Improvement Plant
Construction of Gabion Basket for Couva River
Sports Company
Upgrade Works to Springvale Recreation Grounds, Pavillion & Game Courts
Restoration Works to Honeymoon Recreation Grounds, Pavillion & Game Courts
WASA
Temporary Road Restoration in Tobago
2013
CISL
Road Programme at San Juan East
CTB
Fencing and Paving of Basket Ball Courts
MTS
Desilting of the Oropuche River
NIPDEC
Programme for Road Efficiency
PSAEL
Construction of Road
Rural Development Company of Trinidad & Tobago Ltd. (RDC)
Road & Drainage at Mamoral
Roadworks at Munroe Road Community Centre
Siparia Regional Corporation
Rehabilitation of Roadway

Projects Successfully Completed (continued)

2012
CISL
Harridial Park Drainage & Road Works
EMBD
Rehabilitation of Access Roads Chatam/cedros
Refurbishment of Ortiore Pt Radix Fish Landing Site
Rehabilitation of Access Roads San Pedro
Orange Grove Project Rehabilitation of Rd Works
Rehabilitation of Access Roads
HDC
Drainage Works Oropune Gardens Housing Development
MTS
Desilting of the Caroni River Mouth
Rural Development Company of Trinidad & Tobago Ltd. (RDC)
Nelson Road Paving Works
SWMCOL
Roadworks at Beetham Landfill
TTCAA
Repair Works at Morne Catherine Road, Chaguaramas
WASA
Road Restoration Works at Various Sites
2011
EFCL
Brazil RC Primary School
Construction of the Phoenix Park School
Construction of the Union Hall School
Repairs to the Bon Air Primary School
Biche Prebyterian School
Arima North Secondary School
Jubilee Presbyterian School
Dharuloom Boys College
Dharuloom Girls College
NAMDEVCO
Construction of the Namdevco Sealots Market
WEST ATLANTIC CONSTRUCTION
Oropune Gardens Phase 4 Housing Development Piarco

Projects Successfully Completed (continued)

2010
Diego Martin Regional Corporation
Paving and Construction
Ezcon Readymix Ltd
Asphalt Paving at Pt. Lisas Compound
General Technology Co. Ltd.
Site Works for the Waste Water Treatment Ponds at Tamana Intech Park
Home Construction. Ltd.
Trincity Mall Crossings Clear and Prepare Road
Preparation & Paving Projects
MR SHAMIKA CUDJOE
Road Restoration Works along Churchill-Roosevelt Highway, Sea Lots
MINISTRY OF AGRICULTURE
Rural Access Road Programs Landslips
MTS
Short Term Flood & Mitigation Programme Desilting of Sangre Chiquito River
Dredging Works for the Sealots Cove
Desilting of Phase A - St Jon's Canal Phase 1
Desilting of the Blue River Mouth
Dredging of the Coco Main Drain & Oropune River
NIDCO
Clearing and Desilting Works To The Llan River and Upgrade Retention Pond and Confluence with Marchine And Mc Lelland River
Dredging of the Mausica River
Dredging of the Trinidad River
Parksquare Co Ltd
Build Roads, Pave Roads, Sewer and Water
PPGPL
Third Phase Dock 2 Dredging (Reference PPGPL 712014)
Rio Claro Constructions
Asphalt Paving at Logan Trace Manzanilla
REESAL HARDWARE
Paving Works to Mission Road
St. Andrew/St. David District
Road Re-instatement Works Guaico
T&TEC
Installation of Cables Various Sites
WASA
Dredging Of The Clarke Road Dam
West Atlantic Construction
Pavings Works At Trincity Mall Car Park





www.kallco.co